

Tideland

David Batchelder

17th September – 9th November 2016

The gallery is open on appointment only. Please contact us at:

gallery@schiltpublishing.com or tel. nrs. +31 (0)20 330 59 29 / +31 (0)6 51 32 06 56 / +31 (0)6 51 98 47 47

David Batchelder

After five years of looking closely through his camera at a small beach, David Batchelder no longer sees the shores as we know them. His vision now is of a private reality within the tideland. In *Tideland*, Batchelder invites you to join him in his visual journey into a tideland like none that has yet been photographed. Batchelder uses the camera, not to picture more clearly that which we already know, but to discover and capture that which we have no idea exists. He shares with us an inexplicable, ambiguous, imaginative and odd world of magical visions – landscapes, spaces, creatures and curious objects, disfigured and eroded by the ocean. Although Batchelder uses digital processes, his approach to creative camera work has its origin very much in the era of film, using a digital camera and Photoshop as one would have used a film camera and a darkroom.

In the 1960s, David Batchelder received an MA and MFA in photography from the University of Iowa studying under John Schulze. He has taught photography at Smith College, Amherst College, Boston University, Dartmouth College, and Plymouth State College. His early photographs have been exhibited widely, published in *Aperture Magazine*, and can be admired in many collections including: Institute of Contemporary Art Boston, Museum of Fine Arts Boston, Museum of Fine Arts Houston. Batchelder stopped making creative photographs in 1984, and resumed again when the shores caught his eye.

All prices are inclusive of VAT, correct as of November 2016. To purchase a framed print there is an additional cost of €150 or €200 depending on size. More sizes are available.



1: From the series *Tideland*

Archival Giclée Print

Size: 57 x 38 cm.

Edition: 1/8

€ 3.000



2: From the series *Tideland*

Archival Giclée Print

Size: 57 x 38 cm.

Edition: 1/8

€ 3.000



3: From the series Tideland

Archival Giclée Print

Size: 57 x 38 cm.

Edition: 4/8

€ 3.000



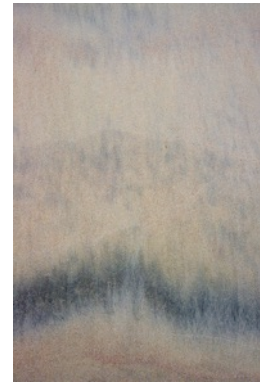
4: From the series Tideland

Archival Giclée Print

Size: 57 x 38 cm.

Edition: 4/8

€ 3.000



5: From the series Tideland

Archival Giclée Print

Size: 57 x 38 cm.

Edition: 3/8

€ 3.000



6: From the series Tideland

Archival Giclée Print

Size: 57 x 38 cm.

Edition: 1/8

€ 3.000



7: From the series Tideland

Archival Giclée Print

Size: 57 x 38 cm.

Edition: 2/8

€ 3.000



8: From the series Tideland

Archival Giclée Print

Size: 57 x 38 cm.

Edition: 1/8

€ 3.000



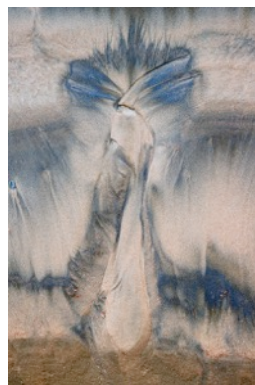
9: From the series Tideland

Archival Giclée Print

Size: 57 x 38 cm.

Edition: 1/8

€ 3.000



10: From the series Tideland

Archival Giclée Print

Size: 57 x 38 cm.

Edition: 3/8

€ 3.000



11: From the series Tideland

Archival Giclée Print

Size: 57 x 38 cm.

Edition: 1/8

€ 3.000



12: From the series Tideland

Archival Giclée Print

Size: 57 x 38 cm.

Edition: 3/8

€ 3.000



13: From the series Tideland

Archival Giclée Print

Size: 57 x 38 cm.

Edition: 5/8

€ 3.000



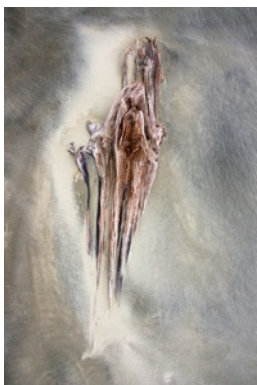
14: From the series Tideland

Archival Giclée Print

Size: 57 x 38 cm.

Edition: 3/8

€ 3.000



15: From the series Tideland

Archival Giclée Print

Size: 57 x 38 cm.

Edition: 5/8

€ 3.000



16: From the series Tideland

Archival Giclée Print

Size: 92 x 61 cm.

Edition: 2/8

€ 5.000



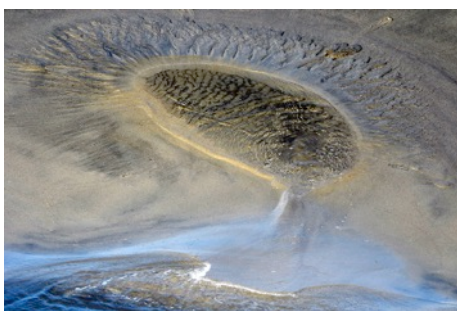
17: From the series Tideland

Archival Giclée Print

Size: 57 x 38 cm.

Edition: 2/8

€ 3.000



18: From the series Tideland

Archival Giclée Print

Size: 57 x 38 cm.

Edition: 5/8

€ 3.000



19: From the series Tideland

Archival Giclée Print

Size: 57 x 38 cm.

Edition: 4/8

€ 3.000



20: From the series Tideland

Archival Giclée Print

Size: 57 x 38 cm.

Edition: 1/8

€ 3.000



21: From the series Tideland

Archival Giclée Print

Size: 57 x 38 cm.

Edition: 3/8

€ 3.000



22: From the series Tideland

Archival Giclée Print

Size: 57 x 38 cm.

Edition: 1/8

€ 3.000



23: From the series Tideland

Archival Giclée Print

Size: 57 x 38 cm.

Edition: 2/8

€ 3.000



24: From the series Tideland

Archival Giclée Print

Size: 57 x 38 cm.

Edition: 1/8

€ 3.000



25: From the series Tideland

Archival Giclée Print

Size: 57 x 38 cm.

Edition: 1/8

€ 3.000

